

G10B-A001 Series

M4 Mounting Waterproof Micro Switch



■ Features

- ◆ Designed for water and dust tight (IP67)
- ◆ Snap action contact structure
- ◆ Single-point mounting with M4 screw
- ◆ Widely used in automotive electronics, appliance and industrial control

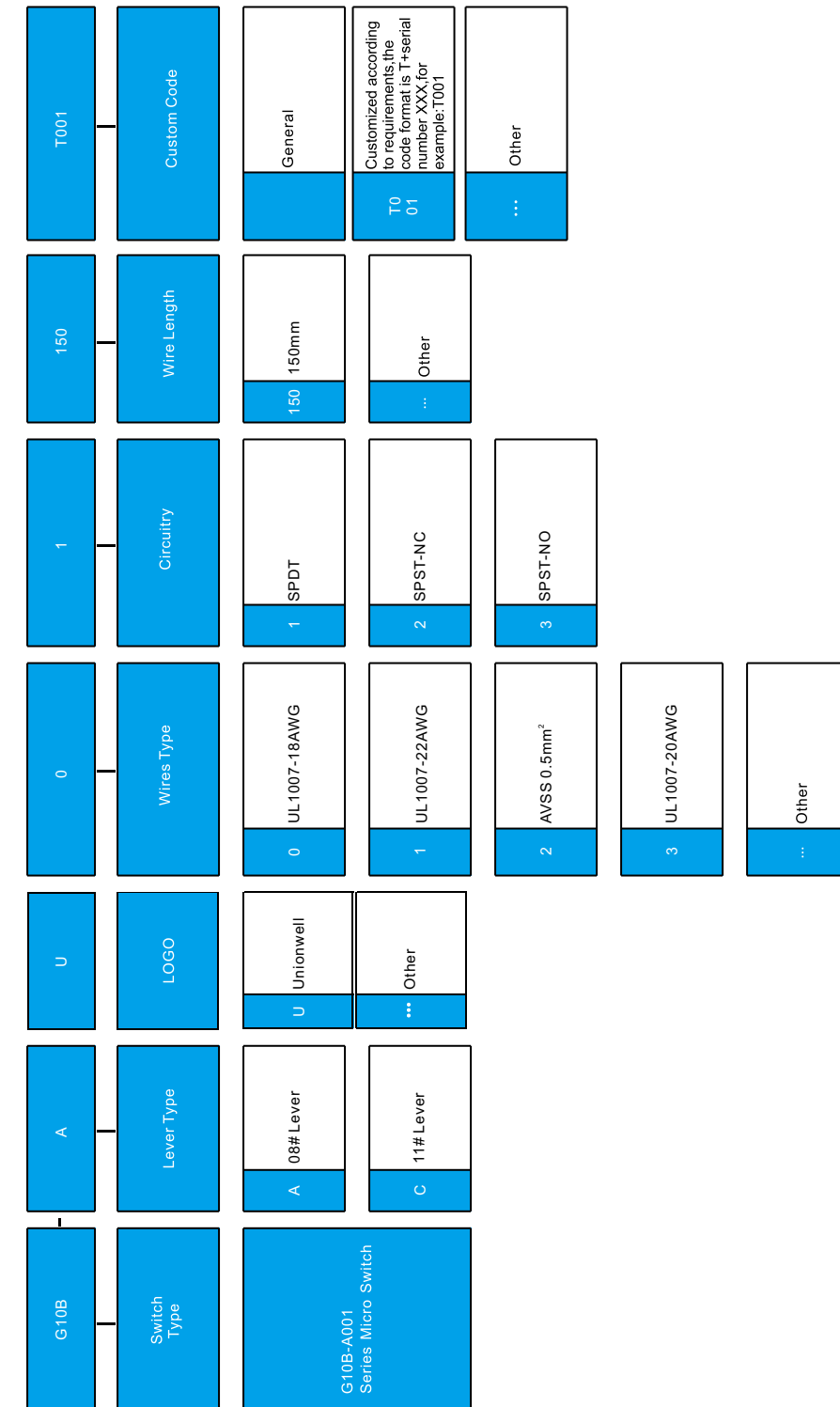
■ Application

- ◆ Car
- ◆ Charging Station
- ◆ Charging Gun
- ◆ Air-Conditioner
- ◆ Communication

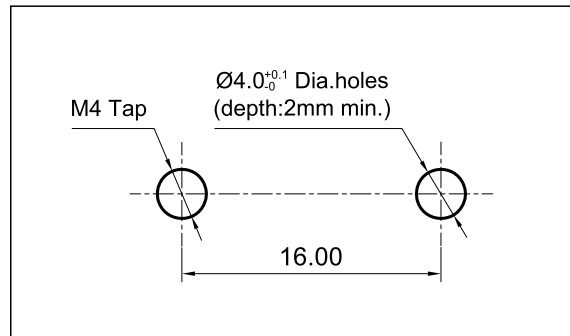
■ Parameters

Rating	1A/30VDC	
Operating Frequency	Electrical	10~30 cycles/min
	Mechanical	120 cycles/min
Contact Resistance (Initial Value)	100mΩ Max.	
Insulation Resistance (at 500 VDC)	100MΩ Min.	
Dielectric Strength	500VAC 50~60Hz for 1 Min	
Operating Temperature	-40°C~ +85°C	
Operating Humidity	85% RH Max	
Service Life	Electrical	10,000 cycles
	Mechanical	300,000 cycles

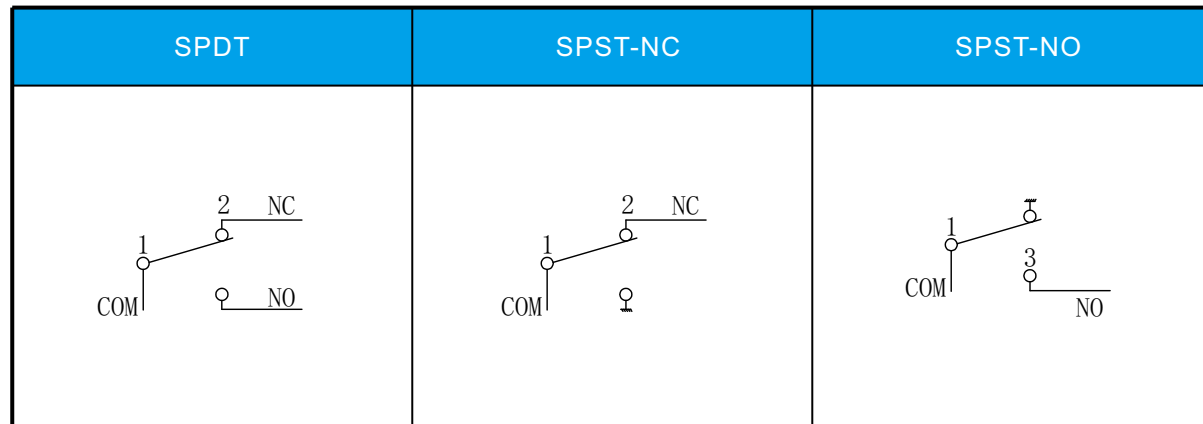
G10B-A001 Series Micro Switch Ordering Instruction



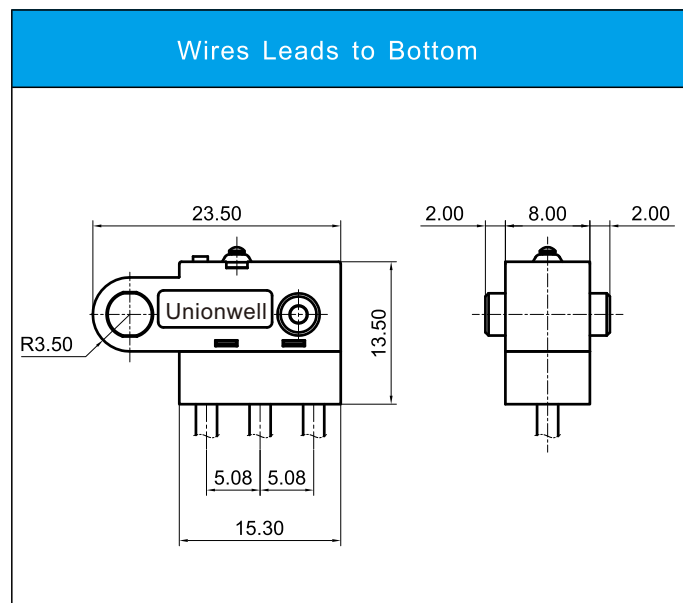
■ Mounting Hole Dimensions



■ Circuit Configuration

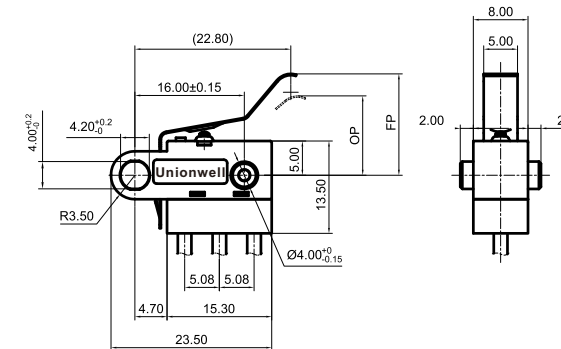


■ Lead Wire Style



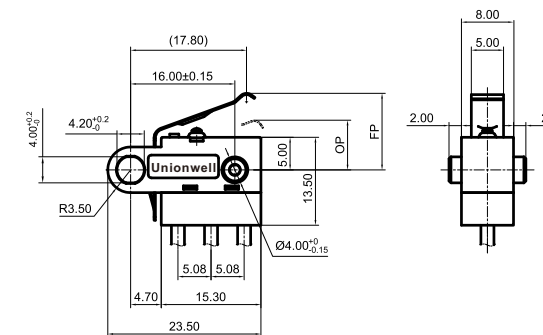
■ Overall Dimensions and Operating Characteristics

◆ G10B-A □ □ 1U



OF Max. (gf)	RF Min. (gf)	PT Max. (mm)	OT Min. (mm)	DT Max. (mm)	FP Max. (mm)	OP (mm)
250	30	6.00	1.00	1.20	16.50	11.50±2.00

◆ G10B-C □ □ 1U



OF Max. (gf)	RF Min. (gf)	PT Max. (mm)	OT Min. (mm)	DT Max. (mm)	FP Max. (mm)	OP (mm)
300	60	6.00	0.30	1.00	12.50	6.80±1.00